

## FEBRUARY

### Recruiting Calendars

#### Men's Basketball

Evaluation Period:  
Oct. 6, 2008-March 31, 2009

#### Women's Basketball

Evaluation Period:  
Sept 16, 2008 - April 21, 2009  
(shall not exceed 100 days of  
off-campus recruiting)

#### Women's Softball

Contact Period:  
January 2, 2009 - July 31, 2009

Dead Period:  
April 6-9, 2009

#### Baseball

Quiet Period:  
Nov. 14, 2008-Feb. 28, 2009

#### **EXCEPT FOR**

Dead Period: Jan. 2-6, 2009

#### Women's Volleyball

Contact Period:  
January 1, 2009 - July 31, 2009

#### **EXCEPT FOR**

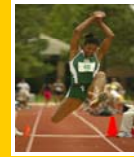
Quiet Period:  
January 1-16, 2009

#### Women's Lacrosse

Contact Period:  
January 2, 2009 - May 21, 2009



# COMPLIANCE CORNER



FEBRUARY 2009

## RECRUITING



### 13.1.7 Contact Restrictions at Specified Sites

#### 13.1.7.1 PSA's Educational Institution

Any staff member desiring to contact a prospective student-athlete at the prospective student-athlete's high school, preparatory school or two-year college first shall obtain permission for such contact from that institution's executive officer (or the executive officer's authorized representative). Contact may be made only when such permission is granted. Member institutions also are bound by this provision when recruiting foreign athletes. Violations of this bylaw shall be considered institutional violations per Constitution 2.8.1; however, such violations shall not affect the prospective student-athlete's eligibility.

#### 13.1.7.2 Practice or Competition Site

Recruiting contact may not be made with a prospective student-athlete prior to any athletics competition in which the prospective student-athlete is a participant during the day or days of competition, even if the prospective student-athlete is on an official or unofficial visit. Contact includes the passing of notes or verbally relaying information to a prospective student-athlete by a third party on behalf of an institutional staff member and telephone calls.

### 13.16 U.S. Service Academy Exceptions

#### 13.16.1.3 Freshman at Summer Enrollment Programs

Freshmen entering the official summer enrollment program of one of the four national service academies (U.S. Air Force, Coast Guard, Military and Naval Academies) shall be considered student-athletes of a senior collegiate institution and may not be contacted by other member institutions without permission from the athletics director of the service academy.



Recruiting Calendar  
(cont'd)

Cross Country/Track and Field

Contact Period:  
January 3, 2009 - July 31, 2009

**EXCEPT FOR**

Dead Period:  
February 2 - 5, 2009

Men and Women's Soccer

Dead Period  
February 2-5, 2009

Other Sports

Contact Period:  
January 1, 2009 - July 31, 2009

Definition

(Bylaw 13.02.4.3)

**Quiet Period.** A quiet period is a period of time when it is permissible to make in-person recruiting contacts only on the institution's campus. **No in-person, off campus recruiting contacts or evaluations may be made during the quiet period.**

**Dead Period.** A dead period is a period of time when it is not permissible to make in-person recruiting contacts or evaluations on or off the institution's campus or to permit official or unofficial visits by prospective student-athletes to the institution's campus. The provision of complimentary admissions to a prospective student-athlete during a dead period is prohibited, except as provided by Bylaw 13.7.2.5. During the dead period, a coaching staff member may not serve as a speaker, attend a meeting or banquet at which a prospective student-athletes are in attendance and may not visit a prospective student-athletes institution. It remains permissible however, for an institutional staff member to write or telephone a prospective-student athlete.

## ELIGIBILITY

### 14.4.1 Progress Toward Degree Requirements

To be eligible to represent an institution in intercollegiate athletics competition, a student-athlete shall maintain progress toward a baccalaureate or equivalent degree at that institution as determined by the regulations of that institution. As a general requirement, "progress toward degree" is to be interpreted at each member institution by the academic authorities who determine the meaning of such phrases for all students, subject to controlling legislation of the conference (s) or similar association of which the institution is a member.

### 14.4.3.1.6 Designation of a Degree Program

A student-athlete shall designate a program of studies leading toward a specific baccalaureate degree at the certifying institution prior to participating in competition that occurs during or immediately before the third year of enrollment (fifth semester or seventh quarter) and thereafter shall make progress toward that specific degree. This provision shall be applicable to the eligibility not only of a continuing student, but also of a transfer student from a four-year or two-year collegiate institution who is entering his or her third year of collegiate enrollment, even if the student has not yet completed an academic year in residence or used a season of eligibility in a sport at the certifying institution. Designation of a specific baccalaureate degree program may be accomplished by:

- (a) Formal enrollment by the student-athlete in a specific baccalaureate degree program; or
- (b) Approval by an appropriate academic official (who must not be an academic advisor/counselor employed by the athletics department) of the program leading to the specific baccalaureate degree that the student-athlete is pursuing.

## ACADEMIC AND OTHER SUPPORT SERVICES

### 16.3.1.1 Academic Counseling/Support Services

Member institutions shall make general academic counseling and tutoring services available to all student-athletes. Such counseling and tutoring services may be provided by the department of athletics or the institution's non athletics student support services. In addition, an institution may finance other academic and support services that the institution, at its discretion, determines to be appropriate and necessary for the academic success of its student-athletes.

